

# Authentic Feminine Leadership

Presented to: ICSEW  
January 18, 2022



**Dana Theus**

InPower Coaching

# Introductions



Dana Theus  
Executive Coach  
InPower Coaching  
[www.InPowerCoaching.com](http://www.InPowerCoaching.com)  
[danatheus@inpowercoaching.com](mailto:danatheus@inpowercoaching.com)

# AGENDA

- Welcome!
- Authentic Feminine Leadership
- Reframing common advice to women
- Invitation



Get Real!



<https://www.menti.com/e9qshuejn4>

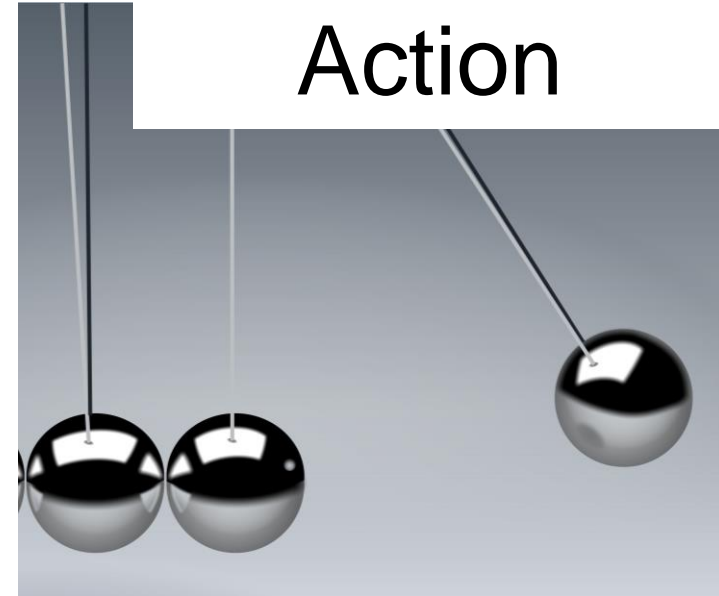
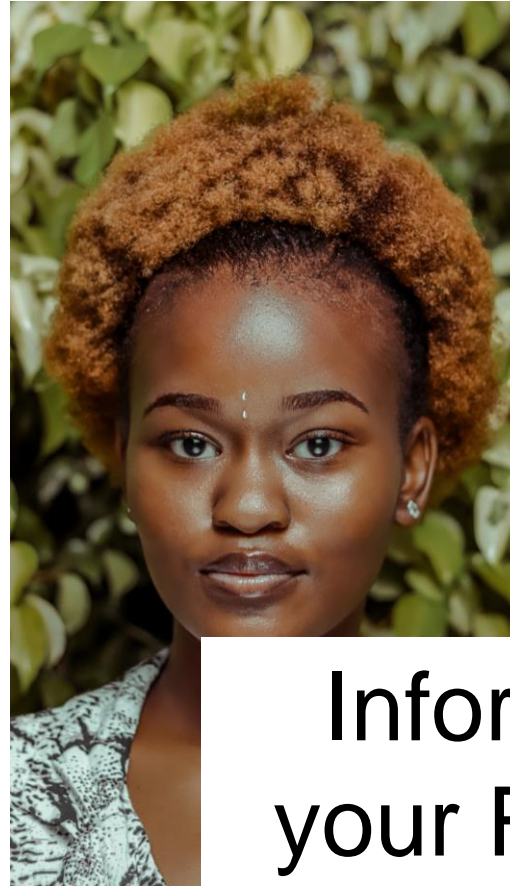
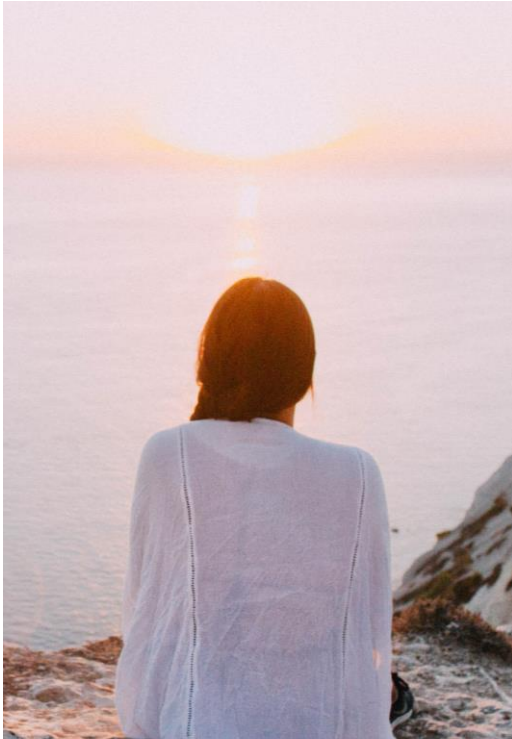
# ONE WORD



# THREE WORDS

# Authentic Feminine Leadership

Intention +  
Action



**You Own It**

Informed by  
your Feminine  
experience



# Women “should”...

- Find **worklife balance**
- **Work smarter**, not harder
- ...not bring their **emotions to work**
- **Get a mentor** to bust through the **glass ceiling**

# Worklife Balance



# Reframing “Worklife Balance”



**Worklife  
EQUITY**



# Equity

# Work Smarter

# Reframing “Work smarter, not harder”

Why?

PURPOSE  
DRIVEN



# Career Goals

# Priorities & Boundaries

# Reframing “Don’t bring your emotions to work”



Bring your **EMOTIONAL**  
**INTELLIGENCE**



# Emotions



# Reframing “Get a mentor to bust through the Glass Ceiling”



**Fix YOUR HALF of  
your problem**



# Growing & Changing

# InPower Women's Essentials



## Newsletter & Coaching Resources Free of Charge

<https://community.inpowercoaching.com/inpower-women-essentials>

